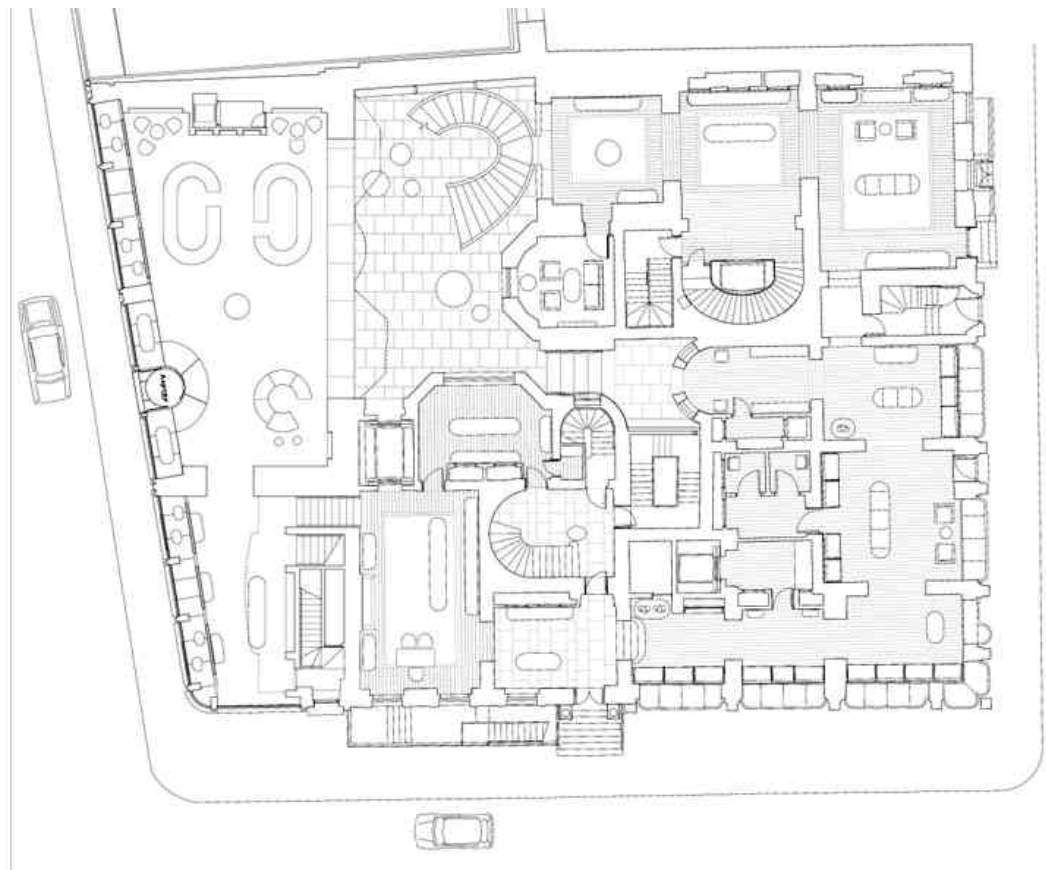




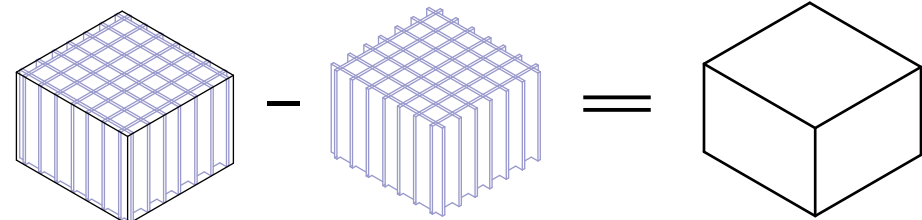
Project 1> Asprey / London: Foster + Partners / 2001-2004

Asprey is one of the world's most premier luxury brands. The specialize in jewelry, silver, as well as custom pieces. Their New Bond Street location is one they have occupied for centuries. Since 1848 the brand has expanded into 5 separate buildings. Due to this expansion, the store prior to it's remodel, had a program that lacked both flow and utility. The massive space was chopped up into a labyrinth of rooms to display pieces.

Foster + Partners was charged with the task of making this space contemporary and functional, yet representative of the long history of the brand. In 2004, their masterpiece was revealed. By removing redundant structural elements, giving the back side of the building new life, and creating an interior glass courtyard, the space feels formal, yet open. It is a masterpiece in how to re create the use of space.



Formal Syntax: Usable Space Out of Divisive Space

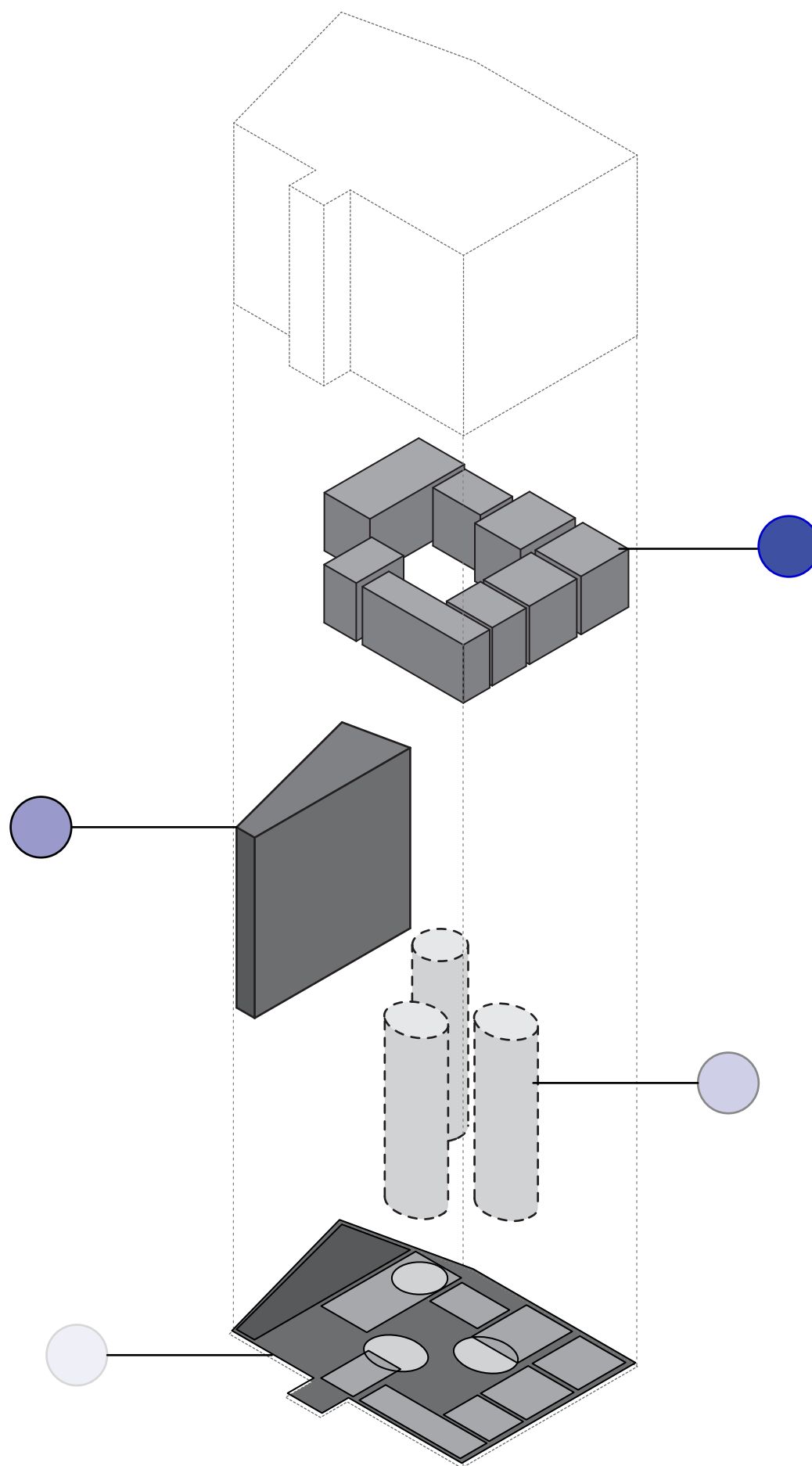


Shop Display Space

Indoor/Outdoor Space

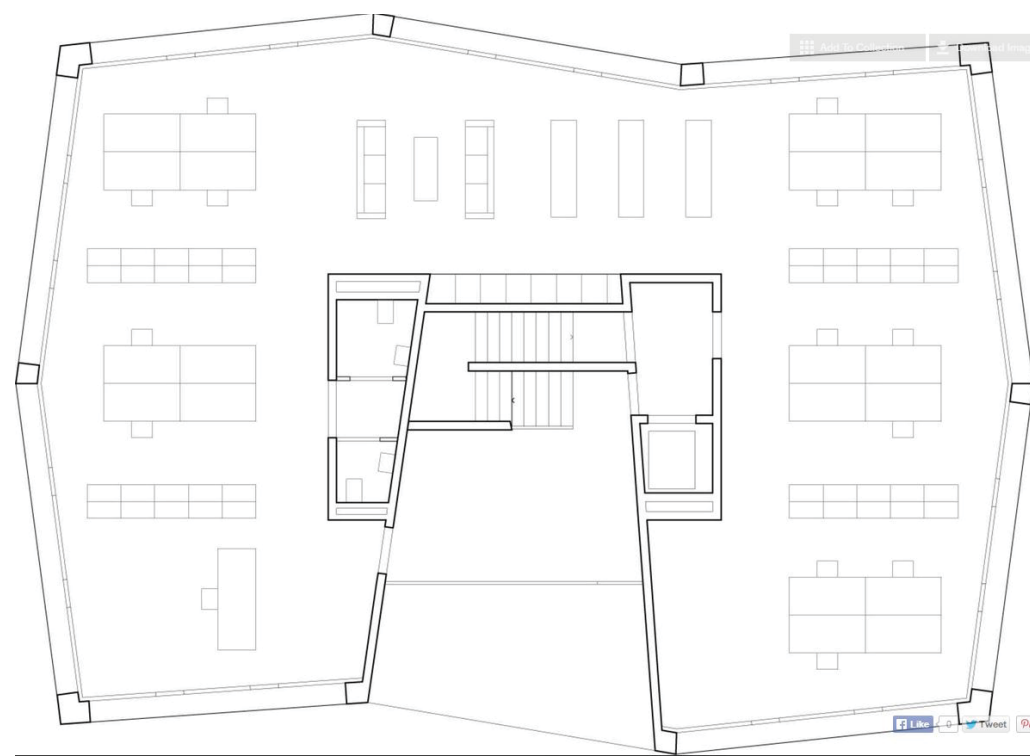
Spiral Staircases

Circulation space

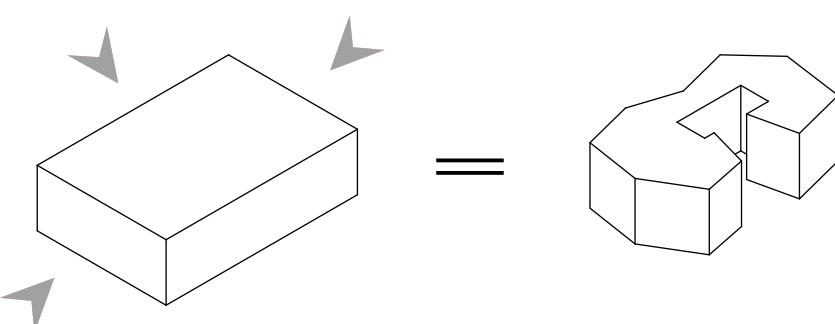


Project 2> Saint Sulpice Office/ Sweden: Fruehauff Henry / 2015

The office building is meant to appeal to neighboring residential homes, as it is adjacent to a home constructed and designed by the same architect. By using a large entry way, the building beacons the visitor in. Once inside the floorplan is incredible open. In fact, both the first and second floor are almost identical large hallways of space that wrap around the building almost completely. The entire project is open concept, encouraging a collaborative program.



Formal Syntax: Collaboration

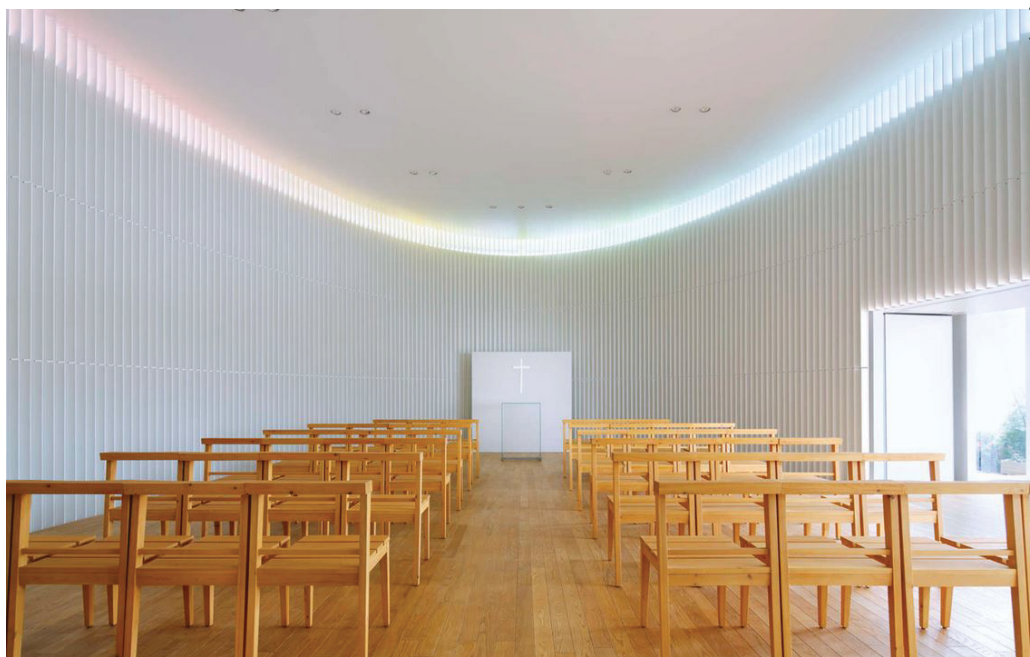
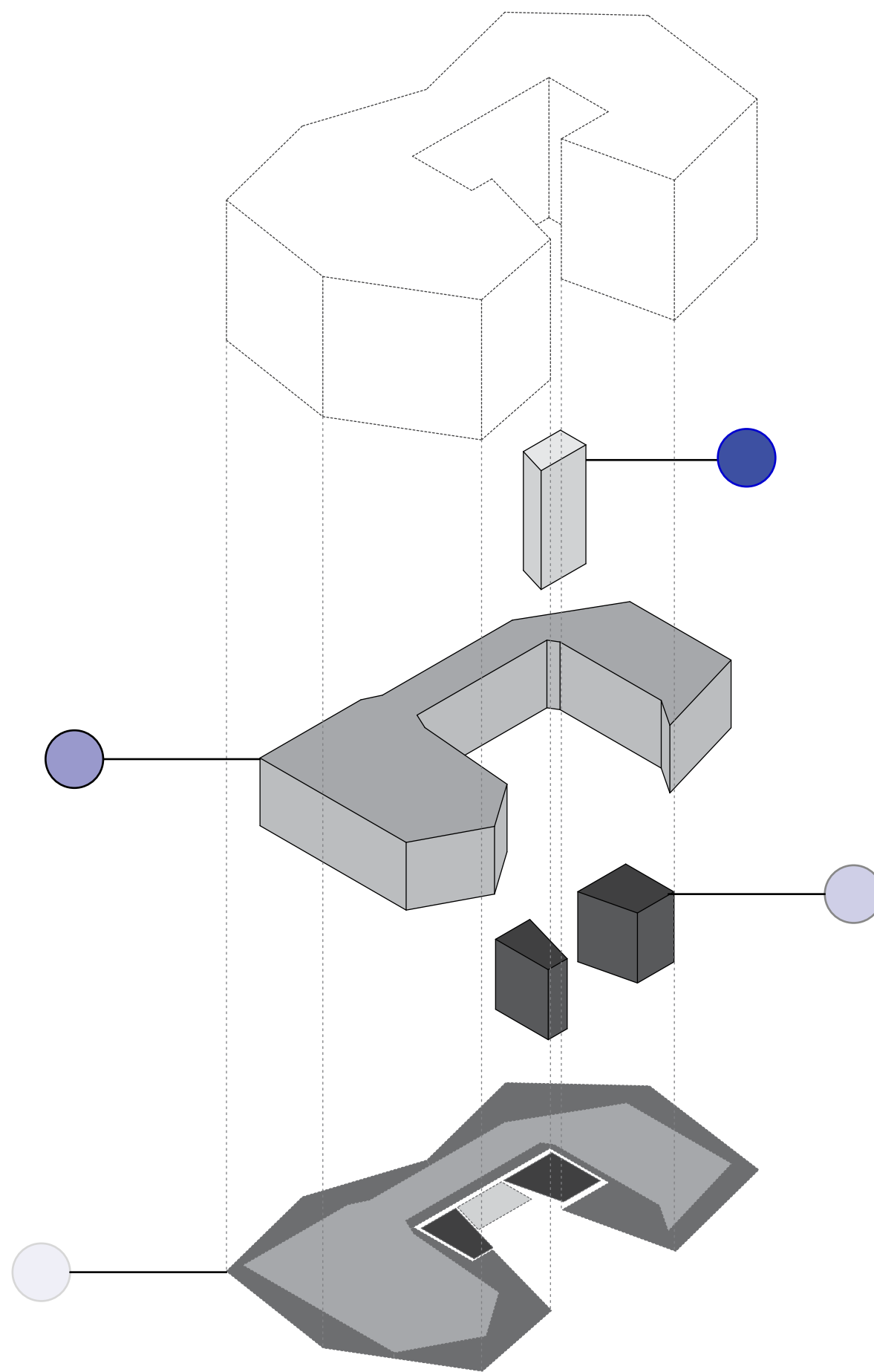


Staircase

Collaborative Office Space

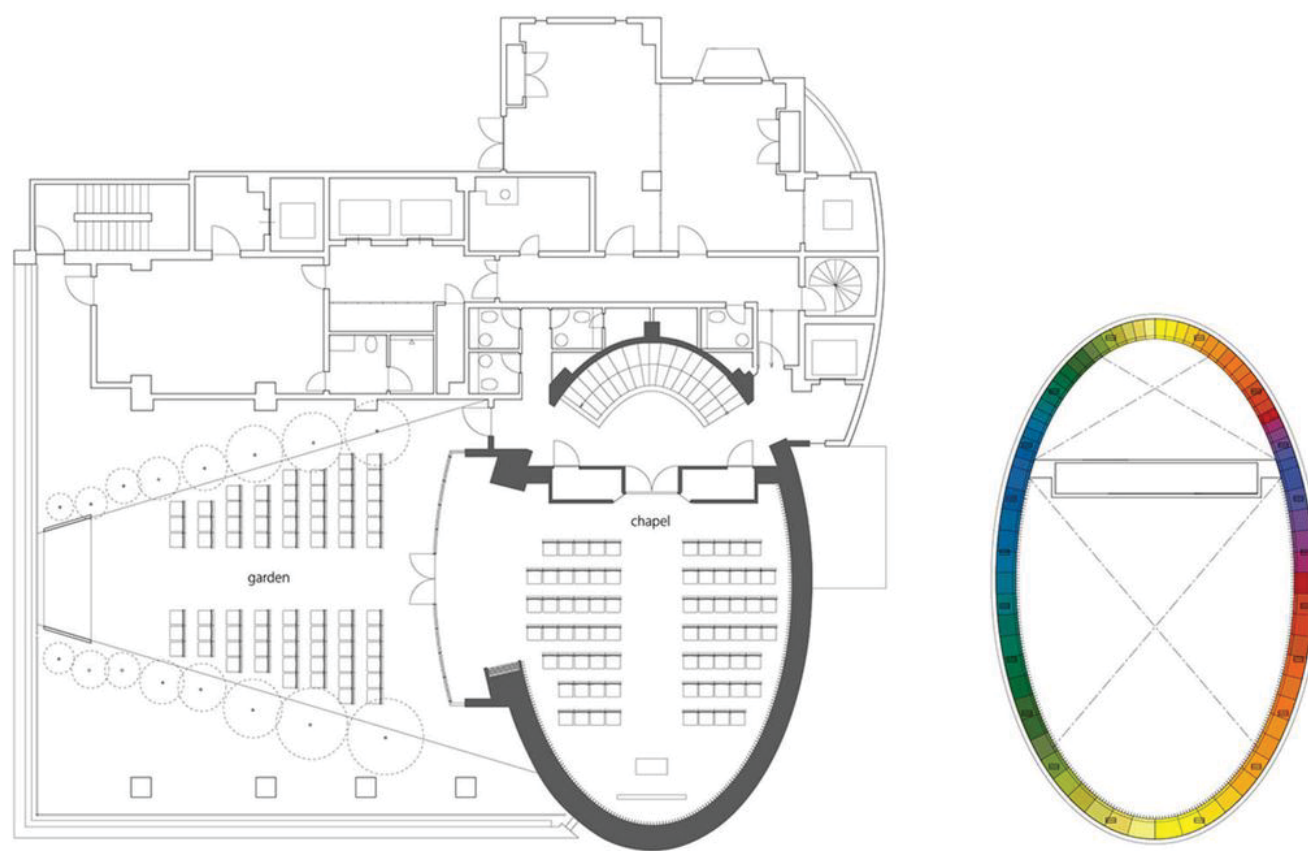
Private Rooms

Circulation



Project 3> Rainbow Chapel / Tokyo: Kubo Tsushima Architects / 2015

This project also takes a look at repurposing a previously designed interior. The Rainbow Chapel was previously a wedding hall. The owner wanted to do away with the unnecessary embellishment, that often comes with ceremonial buildings. In order to account for the now drastically stark interior, the building windows were used to create a rainbow effect. The light became the ornamentation, rather than tangible additions. Each seemingly white rib, that is used to make up the accordan wall effect is painted a different hue, so that when the light passes through there will be a very subtle color effect in the overall space. When all of these elements are combined the result is an aetherial place of worship.



Formal Syntax: Performative



Chapel

Outdoor Space

Outdoor Acoustics

Circulation and Acoustic Padding

